



ROWAT[®] HDPE

water control products



... Providing Solutions

ROWAT ASIA SDN. BHD.

Bergschenhoek Civiele Techniek BV of the **Netherlands** has been a leading manufacturer of water control products for more than 20 years and export its products to various parts of the world.

The range of products is extensive and well engineered for it to be durable and maintenance free.

Rowat Asia Sdn Bhd has been established as an associate Company in order to bring its knowhow and expertise closer to the marketplace.

This catalogue serves to depict its range of products and is not meant to be exhaustive. Kindly request for the datasheet for details of respective item. The Company will endeavour to serve your every need





Unique Products to Control Water Level



Rowat RSA



Rowat RHA



Rowat RLK
Rowat RFK
Rowat RPK



Rowat RLSA



Rowat RKLS

With the **Rowat HDPE** products we can offer the best solution for almost every water management project. The range is extensive, innovative and is manufactured from **HDPE** and other durable materials such as stainless steel and aluminium, which make it virtually maintenance free.

Thanks to our know-how and far-reaching efficiency in engineering and production, **Rowat** products are constantly being improved. In addition the selective use of materials provide specific advantages in an optimum product. The majority of our products are modular in construction, i.e. most of the semi-manufactured products are in stock, which means that a product can be assembled and delivered quickly.

The products are a combination of high-quality **HDPE** materials, stainless steel 316 or aluminium. These materials are highly resistant to chemicals, ageing and weathering. The products are easy to install, partly due to their light weight. In addition the products can be equipped using a wide range of handy accessories such as operating cranks, spigots, spindle extensions, etc. **Rowat** products are manufactured in a professional way and are characterised by their excellent price quality ratio. You are also assured of professional service and sound technical advice.

The advantages

- Maintenance free.
- Offers the best solution for almost every water management project.
- Fast delivery, due partly to modular construction.
- Well engineered and durable construction.
- Low torque operation.
- Highly resistant to chemicals, ageing and weathering.
- Durable materials.



The **Rowat** RSA is an end or inlet sluice gate for use in water and wastewater treatment plants, processing industries, as well as in prefabricated concrete constructions or public works. A wide range of accessories is available to increase its efficiency.



RHA - Sluice Gate Hand Lift

The **Rowat** RHA is an inlet sluice gate for use in an environment with low water pressure, e.g. along ditches and water inlet pipes. Obviously it is available in various sizes.

Features
<ul style="list-style-type: none"> • Maintenance free. • Maximum allowable water pressure 5 metres. • Sizes range from 150 mm – 1500 mm diameter. • Seated and unseated water pressure. • Non rising spindle. • Manufactured in stainless steel 316/HDPE. • Available for wall mounting (round and square openings).

Features
<ul style="list-style-type: none"> • Maintenance free. • Maximum allowable water pressure 1 metre. • Seated water pressure. • Available for wall mounting. • Can be locked using padlock. • Ball-bearing block can be supplied as optional. • Can be supplied with operating extension.

Rowat® RLK - Flap Valve Gravity Discharge



The **Rowat RLK** is a flap valve for mounting against a straight wall. It can also be connected to pipes made from various materials such as concrete or PVC.

Features

- Maintenance free.
- Low opening resistance.
- Replacement EPDM seal.
- Can be supplied for wall mounting or round culvert. Surcharge spigot available for PVC and concrete connection.

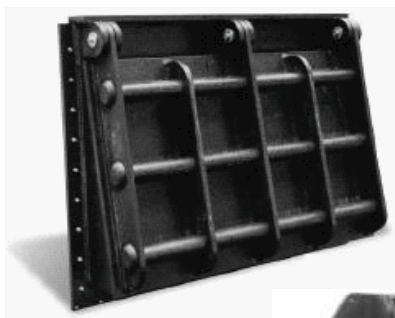


RLSA - Pipeline Valve

The **RLSA** is a pipeline valve, installed in a pipe system, e.g. in a wastewater purification system.

Features

- Maintenance free.
- Low torque.
- Maximum allowable water pressure up to 500 mm diameter
- Can be supplied with telescopic spindle extension.



RLKRH

Type
RLK >Ø600
mm



RPK - Pump Valve

WATER CONTROL PRODUCTS



RKS - Channel Mounted Sluice Gate

A channel mounted sluice gate is used to close off the upstream level in an open channel in e.g. a wastewater treatment plant.



ROS - Overflow Gate

An overflow gate is used to control an upstream level in an open channel by adjusting a raiseable baffle plate.



RDRS - Floating Weir

A floating weir is being used to maintain a constant difference between the upstream and downstream levels. The size of the difference can be set or adjusted by filling/empty the float (with water).



RSS - Stop Log Weir

To regulate an upstream flow by means of stop logs constructed using lightweight aluminium in steps of 100 / 150 mm.



RKHS - Hand Stop

To close off a water flow in an open channel in sewerage systems, (waste) water treatment plants, chemical industries, public works, etc.



Accessories



Handwheel



Crank



Spindle
Extension



Pedestal

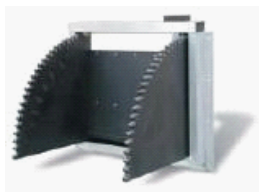


Actuator Box

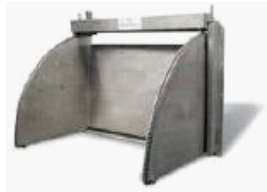


Spigot

Rowat® Tilting Weirs



RKLS



RK02



RK03



RK04

The **Rowat** tilting weirs have been manufactured for over 20 years now. It is popular as a design and is cost-effective. Over the years, the design has proved to be easy to operate and maintenance-free. The four basic designs can cover a wide range of overflow width and height.

Tilting weir applications

Tilting weirs have two functions: to retain water and regulate flow. Tilting weirs can be installed in various situations, bolted against a headwall of concrete, wood, or sheet piling, to retain and regulate water flow from upstream.

Type RKLS

This design has an aluminium frame and HDPE (High Density Polyethylene) weir plate. HDPE is economical, light, durable and impact resistant. Both quarter round segments are actuated by means of a cog wheel operating on large trouble-free gear teeth.

Type RK02

The second model has actuation by a chain engaged round the arc of both quarter round segments. The frame and weir plate itself consist of stainless steel type 304 or 316.

Type RK03

This model is made entirely of stainless steel type 304 or 316. It is designed for larger overflows.

Type RK04

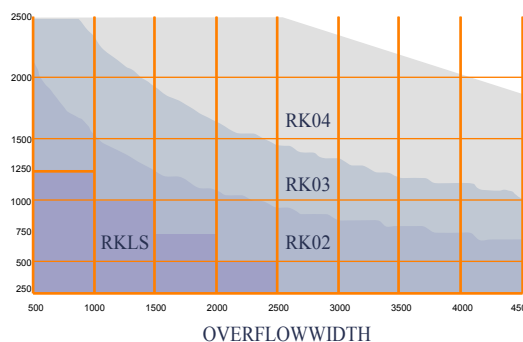
The largest model in the range is also made entirely out of stainless steel type 304 or 316 and is designed for combinations of large overflow width and height.

Actuation

In the standard design if you look downstream the actuation point is on the right hand side. The weir can be actuated by hand or by electric actuator. Where electric actuation is preferred, we can advise on how much torque and what speed of the actuator is needed. We are also able to supply the complete unit with actuator

Advantages

- Maintenance free.
- Durable.
- Fast and easy to install due to prefabricated design.
- Compact design does not intrude upon the landscape.
- Actuation by a cog wheel on a chain is extremely strong and replaceable.



WATER CONTROL PRODUCTS ROWAT HDPE



ROWAT ASIA SDN. BHD

14, Jalan Industri PBP 9,
Taman Industri Pusat Bandar Puchong,
47100 Puchong, Selangor, Malaysia.

Tel: 03-58825525 (Main Line)

Fax: 03-58824662 / 5882 4889

E-mail: rowat@myjaring.net

Company Reg: 768311-W

*An associate of Bergschenhoek Civiele
Techniek BV of Netherlands*

www.rowat.com.my

